

Pipe Flashing

Square and round base pipe flashing

For roof pipe flashing

- Pipe opening can be easily customized on job sight utilizing clearly marked pipe diameters on each flashing.
- EPDM and Silicone are both flexible materials, resistant to ultraviolet rays, cracking or weathering.
- Available in EPDM black or gray and silicone red.

- The aluminum base is corrosion resistant and conforms easily to any panel configuration or roof pitch.
- Retrofit flashing is available for piping with welded caps or cross bars.
- Colors available in standard square and round base pipe flashing.

Application

Square Base

Size	Pipe Size	Base Size	Code Black EPDM	Code Red Silicone	Top
1	1/4 – 2 -3/4"	4-1/2"	PFS-EPDM-#1-1/4to2-3/4	PFS-SC-#1-1/4to2-3/4	Closed
2	7/8 – 4"	6"	PFS-EPDM-#2-7/8to4	PFS-SC-#2-7/8to4	
3	1/4 – 5-3/4"	8"	PFS-EPDM-#3-1/4to5-3/4	PFS-SC-#3-1/4to5-3/4	Closed
4	2-3/4 – 7"	10"	PFS-EPDM-#4-2-3/4to7	PFS-SC-#4-2-3/4to7	
5	4 – 8-1/4"	11"	PFS-EPDM-#5-4to8-1/4	PFS-SC-#5-4to8-1/4	
6	4-3/4 – 10"	12"	PFS-EPDM-#6-4-3/4to10	PFS-SC-#6-4-3/4to10	
7	5-1/2 – 11"	14"	PFS-EPDM-#7-5-1/2to11	PFS-SC-#7-5-1/2to11	
8	6-3/4 – 13-1/2"	17"	PFS-EPDM-#8-6-3/4to13-1/2	PFS-SC-#8-6-3/4to13-1/2	
9	9-1/2 – 20-1/2"	25"	PFS-EPDM-#9-9-1/2to20-1/2	PFS-SC-#9-9-1/2to20-1/2	
10	12 – 28-1/2"	34"	PFS-EPDM-#10-12to28-1/2	PFS-SC-#10-12to28-1/2	



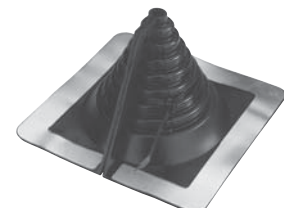
Round Base

Size	Pipe Size	Base Size	Code Gray EPDM	Code Red Silicone	Top
1	1/4 – 2-1/2"	4-3/4"	PFR-EPDM-#1-1/4to2-1/2	PFR-SC-#1-1/4to2-1/2	Closed
2	1-3/4 – 3"	6-1/4"	PFR-EPDM-#2-1-3/4to3	PFR-SC-#2-1-3/4to3	
3	1/4 – 5"	7-3/4"	PFR-EPDM-#3-1/4to5	PFR-SC-#3-1/4to5	Closed
4	3 – 6-1/4"	9-1/4"	PFR-EPDM-#4-3to6-1/4	PFR-SC-#4-3to6-1/4	
5	4-1/4 – 7-3/4"	10-3/4"	PFR-EPDM-#5-4-1/4to7-3/4	PFR-SC-#5-4-1/4to7-3/4	
6	5 – 9"	12-1/4"	PFR-EPDM-#6-5to9	PFR-SC-#6-5to9	
7	6 – 11"	14-1/4"	PFR-EPDM-#7-6to11	PFR-SC-#7-6to11	
8	7 – 13"	16-1/2"	PFR-EPDM-#8-7to13	PFR-SC-#8-7to13	
9	9 – 19"	25-1/2"	PFR-EPDM-#9-9to19	PFR-SC-#9-9to19	



Retrofit Square Base

Size	Pipe Size	Base Size	Code Black EPDM	Code Red Silicone
1	1/2 – 4"	8-3/16"	PFRS-EPDM-#1-1/2to4	PFRS-SC-#1-1/2to4
2	4 – 9-1/4"	14-1/4"	PFRS-EPDM-#2-4to9-1/4	PFRS-SC-#2-4to9-1/4
3	9-1/4 – 16-1/4"	21-1/2"	PFRS-EPDM-#3-9-1/4to16-1/4	PFRS-SC-#3-9-1/4to16-1/4



Continued on following page

Pipe Flashing

Square and round base pipe flashing
For roof pipe flashing

Application

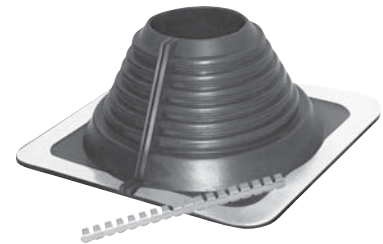
Retrofit Round Base Zipper

Size	Pipe Size	Base Size	Code Black or Gray EPDM	Code Red Silicone
1	3/4 – 2-3/4"	4-3/4"	PFRRZ-EPDM-#1-3/4to2-3/4	PFRRZ-SC-#1-3/4to2-3/4
2	2 – 7-1/4"	10-3/4"	PFRRZ-EPDM-#2-2to7-1/4	PFRRZ-SC-#2-2to7-1/4
3	3-1/4 – 10"	25-1/4"	PFRRZ-EPDM-#3-3-1/4to10	PFRRZ-SC-#3-3-1/4to10



Multi-Flash Square Base

Size	Pipe Size	Base Size	Code Black EPDM	Code Red Silicone
3	1/4 – 5 -3/4"	2 – 4-1/2"	PFMULTI-EPDM-#3	PFMULTI-SC-#3
5	4 – 8-1/4"	3-1/2 – 6-3/4"	PFMULTI-EPDM-#5	PFMULTI-SC-#5
8	6-3/4 – 13-1/2"	6-1/2 – 12"	PFMULTI-EPDM-#8	PFMULTI-SC-#8
10/MAX	12 – 28-1/2"	13 – 27"	PFMULTI-EPDM-#10	PFMULTI-SC-#10



Material Specification

Test Type		EPDM	Silicone (Hi-Temp)
Advance ozone resistance test @ 500 pphm		70 Hrs.	70 Hrs.
High temperature	Intermittent	+275° F	+500° F
	Continuous	+212° F	+437° F
Low temperature	Resistance tested to	-65° F	-100° F
	Tensile strength	1450 psi	700 psi



Options

Colors available in standard square and round base pipe flashing

- Black
- Gray
- Brown
- Light Blue
- Dark Blue
- White
- Terra Cotta
- Light Green
- Dark Green
- Bright Red